

MACLUUMADA XAYAWAANKA

Helidda warka caafimaad oo muhiim u ah xubnaha qoyska iyo xayawaanka haddii aad u baahan tahay in aad guriga ka tagto ka dib markii ay musiibo dhacdo.

DHAQTAR: _____ FARMASHIYAHA: _____
Magaca: _____ Magaca: _____
Lambarka Telefoonka: _____ Lambarka Telefoonka: _____

CAYMISKA CAAFIMAADKA:

Bixiyaha: _____ lambarka garuubka: _____ Aqoonsi Lambar: _____

XARUNTA UGU DHOW LEH MATOOR HADII LO BAAHAN YAHAY AWOODA QALABKA CAFIMAADKA:

DAAWOYIN:

1	_____ (Magaca Qofka)	_____ (Magaca Daawoyinka)	_____ (Qiyaasta daawada)
2	_____ (Magaca Qofka)	_____ (Magaca Daawoyinka)	_____ (Qiyaasta daawada)
3	_____ (Magaca Qofka)	_____ (Magaca Daawoyinka)	_____ (Qiyaasta daawada)
4	_____ (Magaca Qofka)	_____ (Magaca Daawoyinka)	_____ (Qiyaasta daawada)

MACLUUMADA XAYAWAANKA

Magaca Xayawaanka: _____ Nooca Xayawaanka: _____ Qiyaasta da'da: _____

Magaca Xayawaanka: _____ Nooca Xayawaanka: _____ Qiyaasta da'da: _____

1	_____ (Magaca Xayawaanka)	_____ (Magaca Daawoyinka)	_____ (Qiyaasta daawada)
2	_____ (Magaca Xayawaanka)	_____ (Magaca Daawoyinka)	_____ (Qiyaasta daawada)



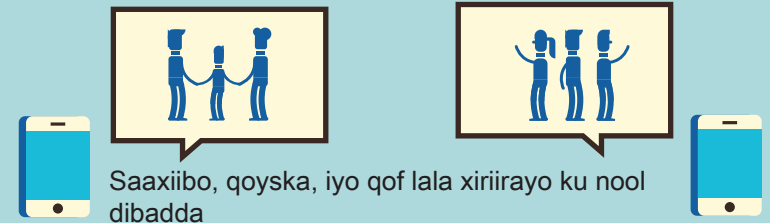
Seattle
Office of Emergency
Management

Diyaar Noqo

Ururso macluumaadka xaaladda degdegga ah

LAMBARADA TELEFOONADA MUHIIMKA AH

Tani waxey u muuqan kartaa waxaan daruuri ahayn - laakiin meeqa lambar ayaad run ahaantii dusha ka-xifdisey



1	_____ (Magaca)	_____ (Lambarka Telefonka)
2	_____ (Magaca)	_____ (Lambarka Telefonka)
3	_____ (Magaca)	_____ (Lambarka Telefonka)
4	_____ (Magaca)	_____ (Lambarka Telefonka)



GOOBAHA BADBAADADA DADWEYNAHA

Haddii aad u baahan tahay gargaar muddada xaaladdaha degdegga ah ama aanad u baahnayn, garashada cidda siinaysa gurigaaga adeegyo badbaado waa muhiim.



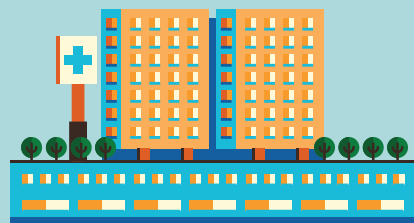
SALDHIGA DABKA

Cinwaanka: _____

Lambarka Telefonka: _____

Wadarta maylka illaa kaalinta: _____

Halista suurtagalka ee jididka ku jira: _____



XARUNTA CAAFIMAADKA

Cinwaanka: _____

Lambarka Telefonka: _____

Wadarta maylka illaa kaalinta: _____

Halista suurtagalka ee jididka ku jira: _____

Goobaha badbaadada dadweynaha waxay noqon karaan meel dhexe oo wixii macluumaad iyo tageero ah goobaha bulshada.



SALDHIGA BOOLIISKA

Cinwaanka: _____

Lambarka Telefonka: _____

Wadarta maylka illaa kaalinta: _____

Halista suurtagalka ee jididka ku jira: _____



MEESHA ISUTAGA BULSHADA

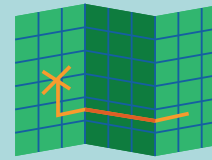
Cinwaanka: _____

Lambarka Telefonka: _____

Wadarta maylka illaa kaalinta: _____

Halista suurtagalka ee jididka ku jira: _____

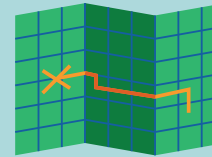
JIDADKA KALE EE TAGA SHAQADA



WADADA HADDA EE GURIGA: _____

Wadarta maylka: _____

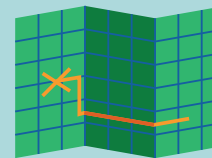
Halista suurtagalka ee jididka ku jira: _____



WADA KALE # 1: _____

Wadarta maylka: _____

Khataraha suurtagali karo wadada: _____



WADA KALE # 2: _____

Wadarta maylka: _____

Khataraha suurtagali karo wadada: _____

Caawinta helista wadada iyo hababka guriga, ilahan soo socda ayaa laga yaabaa inay waxtaraan.

www.metro.kingcounty.gov
www.walkscore.com
www.soundtransit.org/Trip-planner
www.piercetransit.org/mobile/
www.intercitytransit.com
www.wsdot.wa.gov
www.seattle.gov/transportation



IKHTIYAARKA WADAAGGA GAADIIDKA

1. _____

2. _____



IKHTIYAARKA GADIID DADWEYNE OO HUFAN

1. _____

2. _____

3. _____

